

FIRE SERVICES / DETECTION KEY

- Manual call point
- SD Optical Smoke detector with built in sounder
- HD Optical Heat detector with built in sounder
- ⊕ Strobe light beacon wired to fire alarm system
- △ High DB sounder wired to fire alarm system
- ⊠ FAP Fire alarm panel
- E Emergency light non maintained
- EE External Emergency light with 2 hour battery back up
- exit Emergency exit light with 2 hour battery back up
- △ FB Fire blanket
- ⊕ Water portable fire extinguisher and size/capacity
- ⊕ Foam portable fire extinguisher and size/capacity
- ⊕ Wet chemical portable fire extinguisher and size/capacity

Fire Warning System to comply with British Standard 5839: Part 1 : 2019

Every part of an escape route to have artificial lighting supplied by a protected circuit that provides a level of illumination not less than that recommended in BS 5266 Part 1 2005 (Maintained -2 hour duration) and BS EN 1838: 1999 (OR BS 5266-7: 1999) Firefighting Equipment to comply with British Standard EN3, British Standard 7863 : 1996, British Standard 5306-8:200

Signs and Notices to comply with the Health and Safety (Safety Signs and Signals) Regulations 1996 and/or British Standard 5499: Part 1 : 1990.

The applicant must ensure that the upholstered furniture satisfies the Cigarette and Match Ignitability Test specified in British Standard 5852: 1990 (1998). (NOTE - for existing furnishings only)

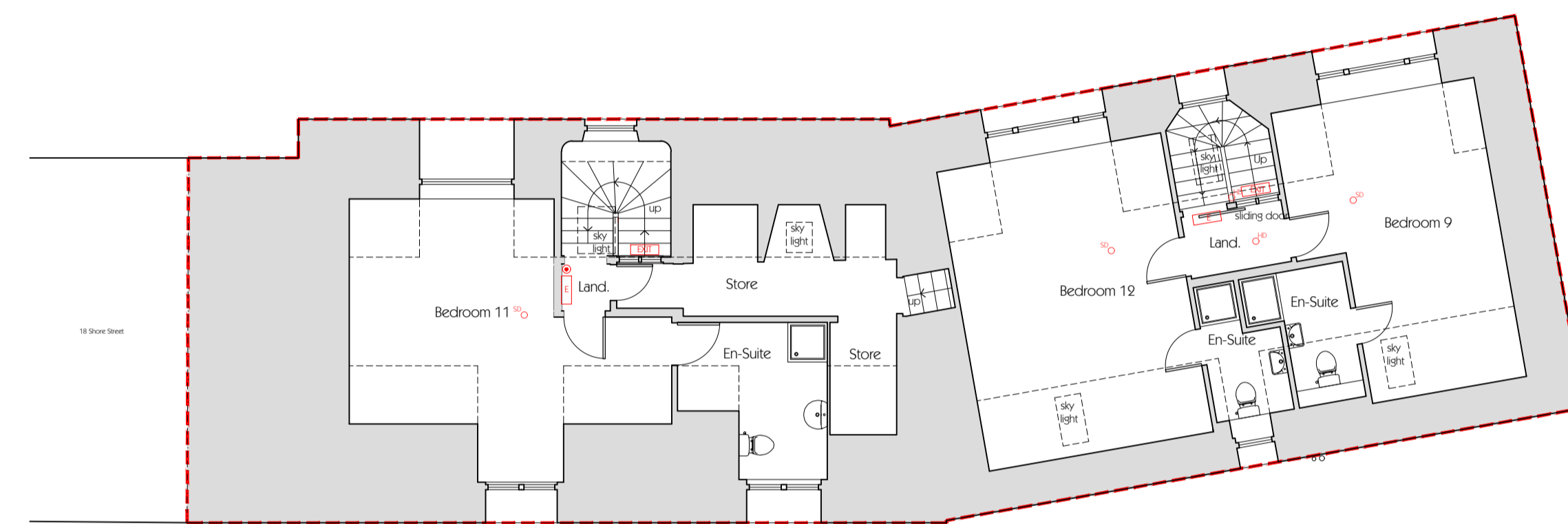
A Certificate of Compliance to the aforementioned British Standards should be issued by a competent person and forwarded to the Fire Authority prior to, or on the date of the final inspection of the premises



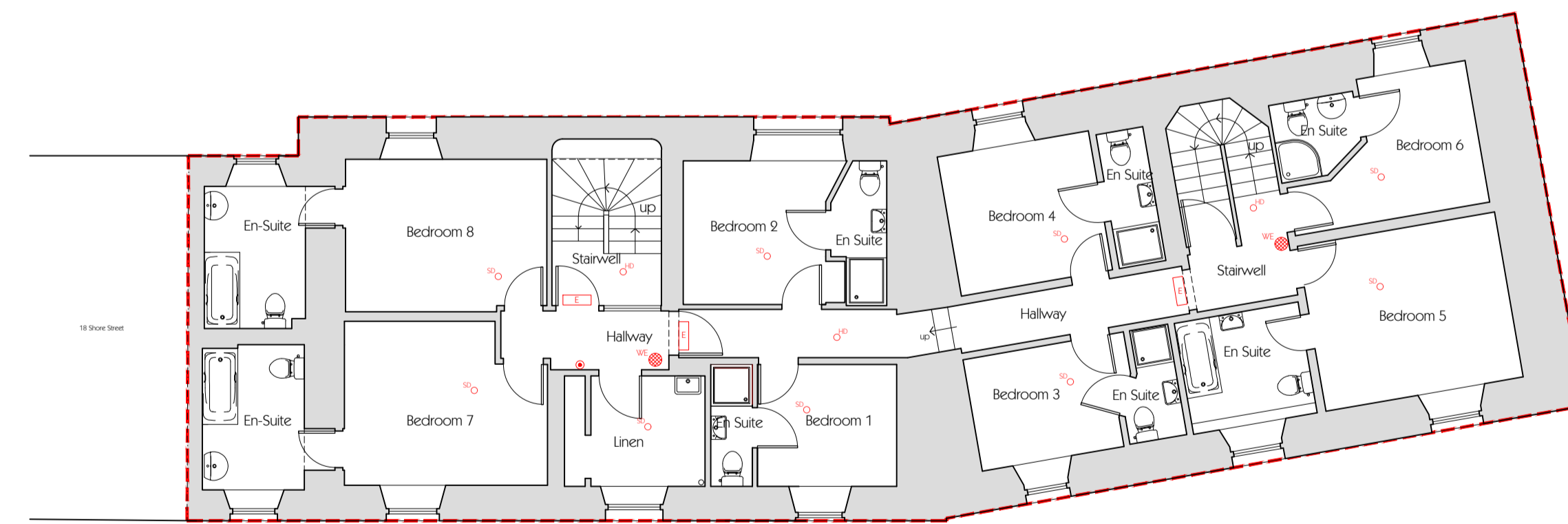
LOCATION PLAN 1:2500



GROUND FLOOR PLAN 1:100

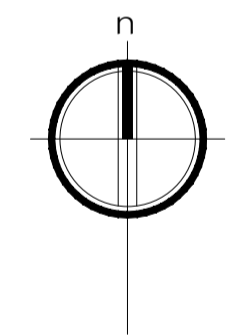


SECOND FLOOR PLAN 1:100



FIRST FLOOR PLAN 1:100

- Extent of property
- ▨ Extent of Customer Area
Total Customer Area (sqm)
Restaurant - 88.5sqm
Whisky Bar - 16.7sqm
Duffies Bar - 27.9sqm
- ▨ External Seating Area - 55.5sqm
Public Occupancy of Premises
(based on occupancy load factor of 0.5 for Whisky Bar and Duffies Bar)
97.9sqm and 16.7sqm = **89 persons**
(based on occupancy load factor of 1.0 for Restaurant)
88.5sqm = **88 persons**
(based on occupancy load factor of 1.0 for external seating)
55.5sqm = **55 persons**
- TOTAL OCCUPANCY 932 PERSONS**



Note: Drawing prepared for application for Licensing Board only.

Client
THE LOCHSIDE HOTEL LTD.

Project
**THE LOCHSIDE HOTEL,
20 SHORE STREET,
ISLE OF ISLAY,
ARGYLL PA43 7LB**

Drawing
FLOOR PLANS

LICENSING DRAWING

Drawn by CMD Date: MAY 2021

Drawing Scale: A1 @ 1:100

CAD Filename:

Beaton + McMurchy
architects
tigh na glaic, taynuilt, argyll. pa35 1jw
tel - 01866 892350 fax - 01866 899390
e-mail mail@bmacarchitects.co.uk
web www.bmacarchitects.co.uk

Drawing No. **2068** LD 01 | Revision

